

Just
¥35,000
per month

SAKURA HOUSE TABATA TOKYO 3 STUDENT DORMITORY

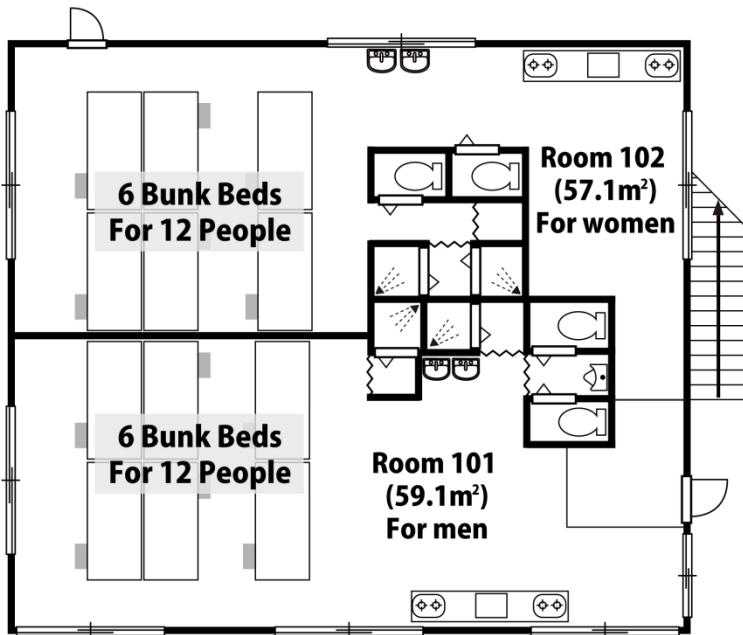
Furnished Dormitory for 24 Residents

Opens October 1, 2016

15 min. walk from JR Tabata Station on the JR Yamanote and Keihin Tohoku Lines



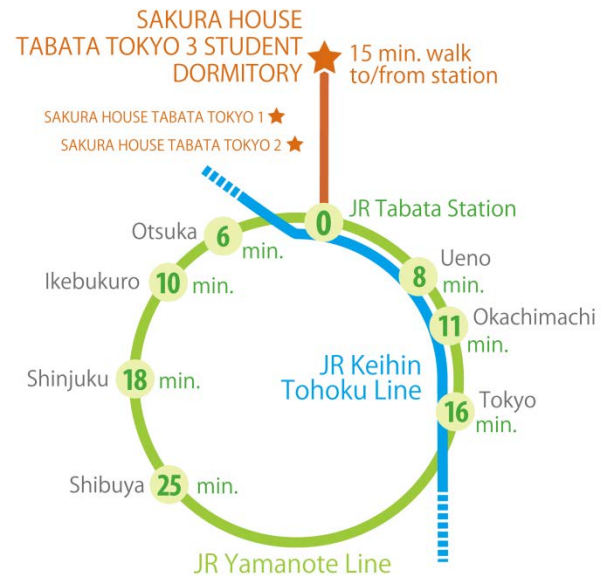
Photo of bunk beds in a sister SAKURA HOUSE dormitory.



Floor plan

- **35,000 yen/month**
per person. Utility fees
included in monthly fee.
Furnished, free Wi-Fi.

- Opens in mid-October, 2016. Houses 24 people (12 men and 12 women).
- 15 minute walk from Tabata Station on the JR Yamanote and Keihin Tohoku Lines.
- Excellent rail transportation.



- Shared kitchens, showers and toilets.
- Laundromat on premise.
- Regular cleaning and maintenance work by staff.

SAKURA HOUSE

TEL: 03-5330-5250 FAX: 03-5330-5251

E-MAIL: info@sakura-house.com

2F, Nishi Shinjuku K-1 Bldg., 7-2-6 Nishi-Shinjuku, Shinjuku-Ku, Tokyo

<http://www.sakura-house.com>

ESTABLISHED 1992

SAKURA HOUSE

Apartments, share houses, vacation rentals and dormitories in Tokyo and Kyoto for visitors from around the world.